

Antelco Group of Companies

LINCOLN
Est. 1959
MOULDING THE FUTURE

ANTELCO®

Dawn

Putting Water Where it Counts!®



Antelco Australia
Antelco Pty Ltd ABN 50 008 062 708
Sales & Marketing,
Orders & Warehouse
Research & Development
PO Box 95, 131 Tolley Rd,
St Agnes SA 5097 Australia
+61 8 8334 4333
adelaide@antelco.com.au

Antelco USA
Antelco Corporation
Sales & Marketing,
Orders & Warehouse
886 Waterway Pl,
Longwood,
Florida 32750 USA
+1 407 331 0699
info@antelco.com

Antelco Europe
Antelco UK Limited
Sales & Marketing,
Orders & Warehouse
17a Chartmoor Rd,
Leighton Buzzard,
Bedfordshire LU7 4WG UK
+44 152 585 9990
orders@antelco.co.uk

Rotor Max™ Midi Sprinkler

antelco.com

Rotor Max™ Midi Sprinklers

Robust and reliable “spinner” sprinkler for use above and below plant foliage and with two trajectory options. Excellent sprinkler distribution patterns and performance.

Features

- Dual outlet spinner enhances performance.
- Standard model has a 25° trajectory with black colored spinner.
- Inverted model has a 0° flat trajectory with khaki colored spinner.
- Suitable for recycled water applications subject to adequate filtration.
- Easily taken apart for servicing.
- UV stabilized materials for long life.

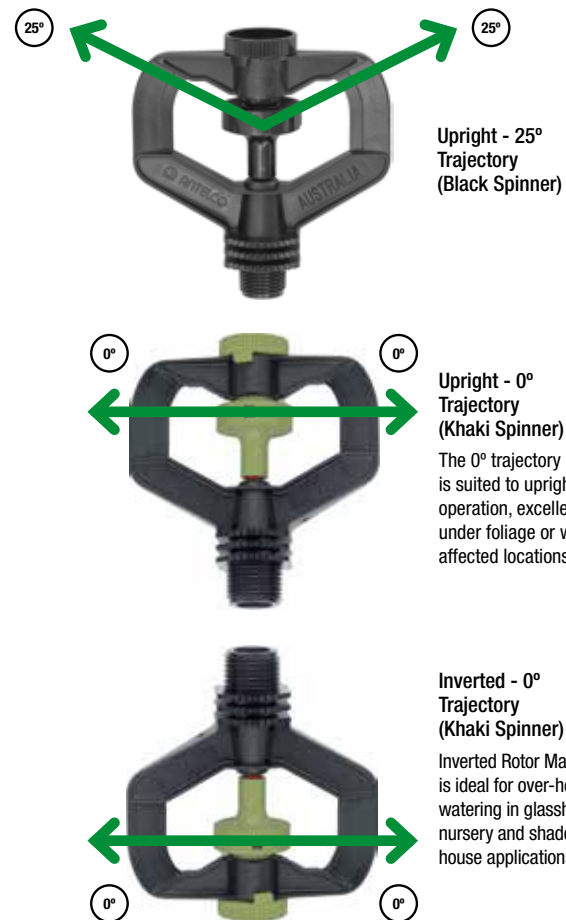
Rotor Max™ Deflector

- Easy snap-on field fitted 180° Deflector.
- Directional ribs distribute the water evenly over the 180° pattern.
- Water is redirected by the cupped spray plate providing improved application uniformity over flat plate deflectors.



Applications

Greenhouses, vegetable row crops and under tree watering. **Accessory - Rotor Max™ Deflector:** Part circle operation for road edges, driveways and end of sprinkler rows.



Rotor Max™ Midi Sprinklers

Performance Chart

Nozzle Size & Color	Pressure (psi)	Flow (gpm)	Upright - 25° on 8" Riser		Inverted - 0° on 6.6 ft Riser
			Diameter (ft)	Stream Height (ft)	Diameter (ft)
0.080" Yellow	15	0.6	22.0	3.2	24.0
	20	0.8	26.0	3.6	27.0
	30	0.9	29.5	3.6	29.5
0.095" Green	40	1.0	31.5	3.9	31.0
	15	1.0	25.0	3.2	27.0
	20	1.2	27.0	3.6	30.0
0.110" Red	30	1.4	31.5	3.6	32.5
	40	1.6	32.5	3.9	33.5
	15	1.3	36.0	3.0	36.0
0.130" Black	20	1.5	39.0	3.5	39.0
	30	1.8	43.0	4.0	43.0
	40	2.1	43.0	4.5	43.0
0.150" Purple	15	1.7	36.0	3.0	36.0
	20	2.0	39.0	3.5	39.0
	30	2.4	43.0	4.0	43.0
0.150" Purple	40	2.8	45.0	4.2	45.0
	15	2.4	40.0	2.3	40.0
	20	2.8	42.0	2.7	42.0
0.150" Purple	30	3.7	46.0	3.4	46.0
	40	4.2	45.0	3.9	45.0

Ordering Information - Rotor Max™ 1/2" Male Thread

Nozzle Size & Color	Part Number	Pack Quantity	Packs Per Carton	Carton (lbs)
0.080" Yellow	21075	20	10	14.1
0.095" Green	21085	20	10	14.1
0.110" Red	21055	20	10	14.1
0.130" Black	21005	20	10	14.1
0.150" Purple	21065	20	10	14.1

Ordering Information - Inverted Rotor Max™ 1/2" Male Thread

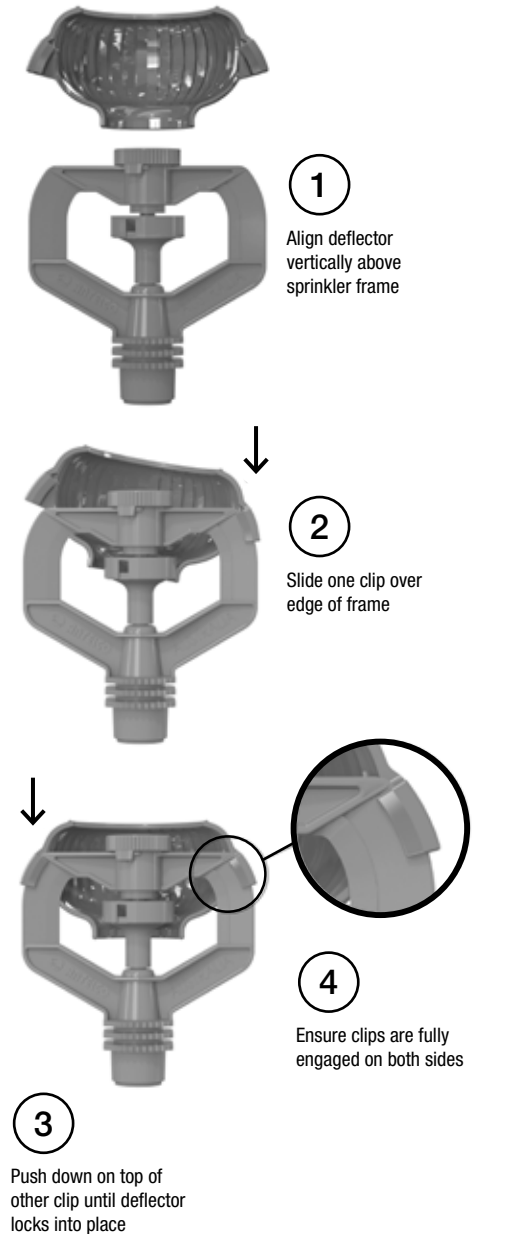
Nozzle Size & Color	Part Number	Pack Quantity	Packs Per Carton	Carton (lbs)
0.080" Yellow	21585	20	10	14.1
0.095" Green	21595	20	10	14.1
0.110" Red	21555	20	10	14.1
0.130" Black	21505	20	10	14.1
0.150" Purple	21565	20	10	14.1

Specifications

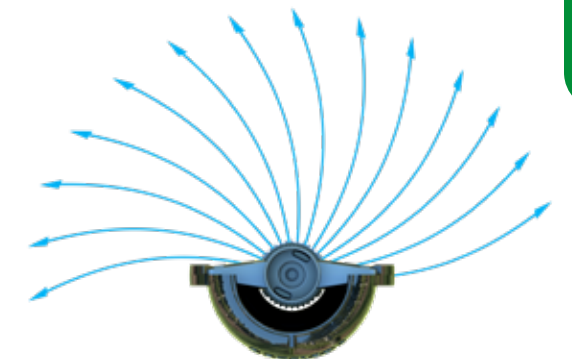
Dimensions Assembled		UV Stabilized Materials		Base/Connection Type
HEIGHT	3.8"	FRAME	polypropylene	INLET thread 1/2" BSPM
WIDTH	3.5"	SPINNER	acetal	
BREADTH	1.2"	NOZZLE	acetal	
WEIGHT (approx.)	1.3 oz	BEARING	acetal	
		BEARING PIN	nylon	

Ordering Information - Rotor Max™ 180° Deflector

Nozzle Size & Color	Part Number	Pack Quantity	Packs Per Carton	Carton (lbs)
Deflector 180°	21365	10	28	10.6



Rotor Max™ 180° Deflector



Rotor Max™ has been independently tested by the Australian Irrigation Technology Centre, Report No. A95003.